

MONTHLY MEMBERSHIP PROGRESS REPORT

LOCATION GREECE

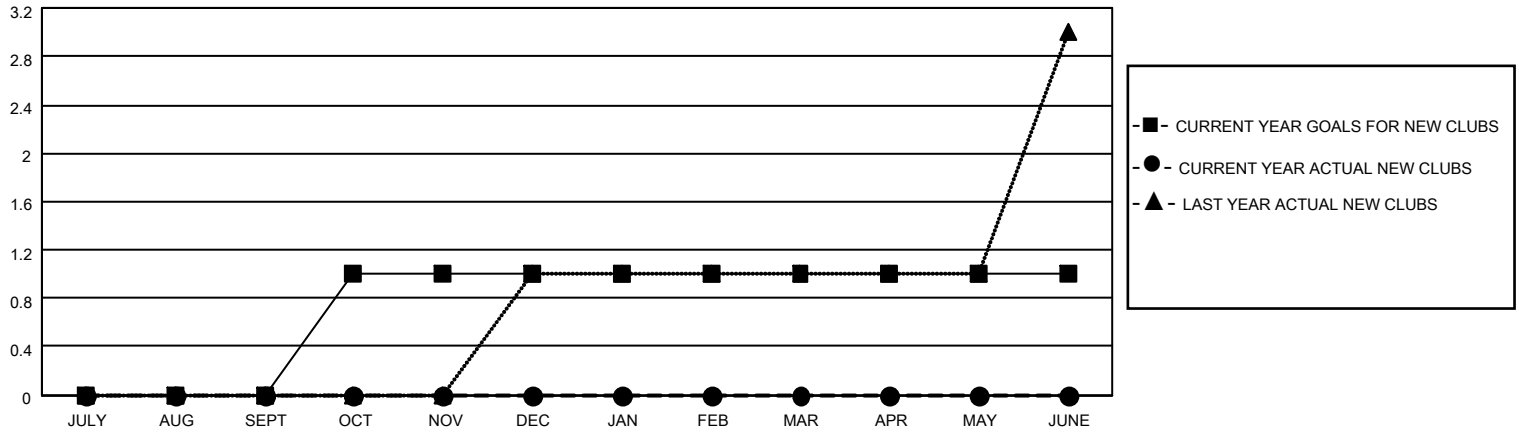
District 117 B

Results as of: 6/30/2023

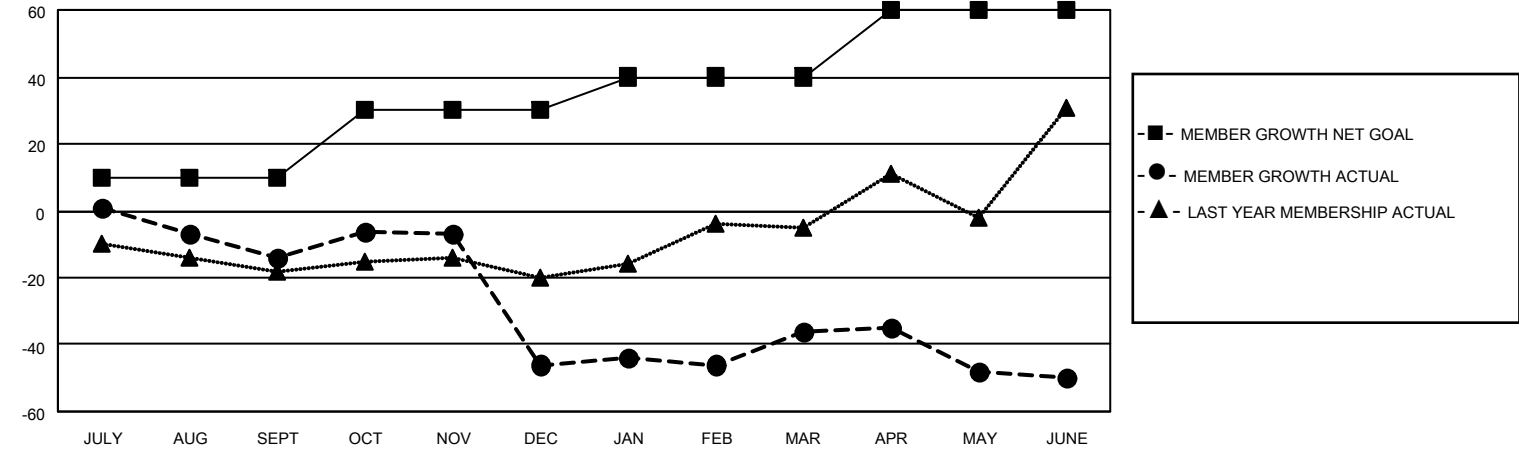
Clubs			
RESULTS FOR 2022-2023			
QUARTER	NEW CLUB GOAL	NEW CLUBS	DROPPED CLUBS
JULY/AUG/SEPT	0	0	0
OCT/NOV/DEC	1	0	1
JAN/FEB/MAR	0	0	0
APR/MAY/JUNE	0	0	1

Members			
RESULTS FOR 2022-2023			
QUARTER	MEMBER GROWTH NET GOAL	MEMBER GROWTH ACTUAL	DROPPED MEMBERS ACTUAL (including transfers)
JULY/AUG/SEPT	10	11	23
OCT/NOV/DEC	20	29	60
JAN/FEB/MAR	10	30	14
APR/MAY/JUNE	20	37	49

GOALS AND ACTUAL NEW CLUBS CUMULATIVE



GOALS AND ACTUAL MEMBERS CUMULATIVE



DROPPED CLUBS: 2	
DROPPED MEMBERS	
DECEASED	13
CLUB CANCELLED	24
OTHER	109
TOTAL	146

29 CLUBS OF 56 ADDED 1 OR MORE NEW MEMBERS

[CLICK HERE FOR CUMULATIVE MEMBERSHIP DATA](#)

<u>GENDER DISTRIBUTION</u>	
MALE	519 (42.86%)
FEMALE	691 (57.06%)
NON BINARY	0 (0.00%)
PREFER NOT TO ANSWER	1 (0.08%)
<hr/>	
TOTAL FAMILY UNIT MEMBERS	280
<hr/>	
FAMILY MEMBERS PAYING HALF DUES	156